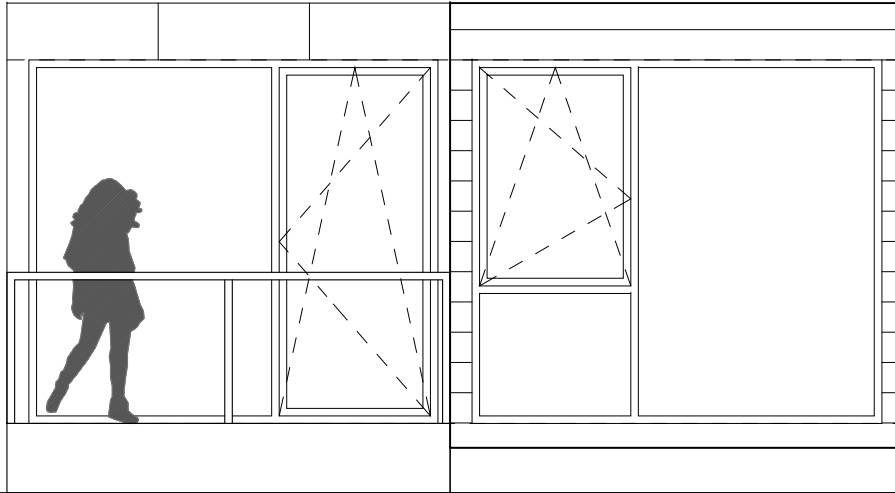
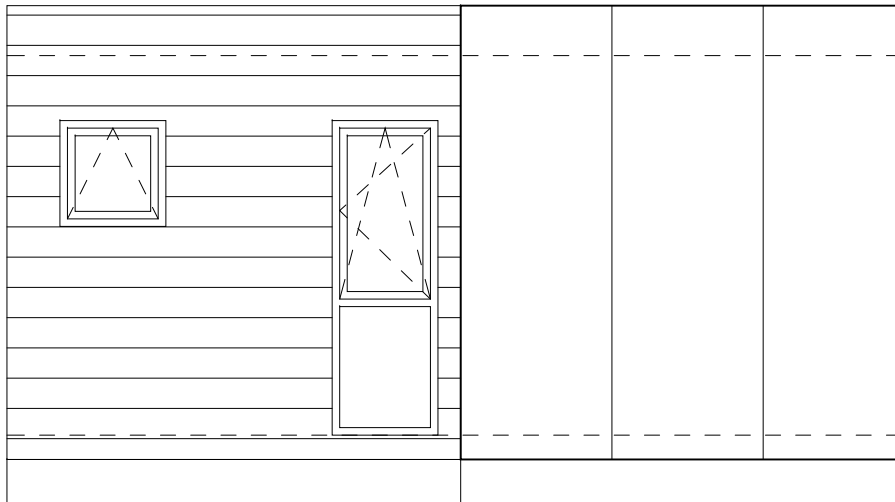


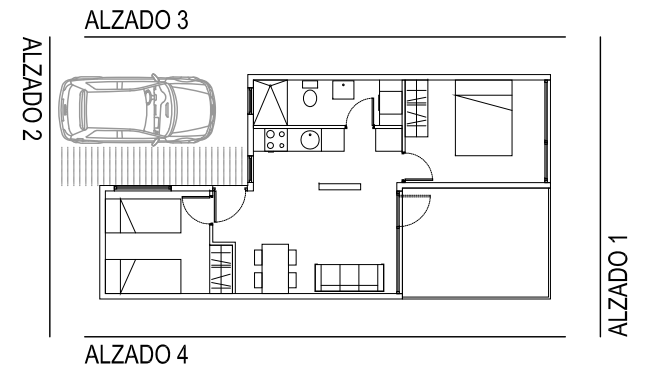
SUPERFICIE CONSTRUIDA
47.71 m²

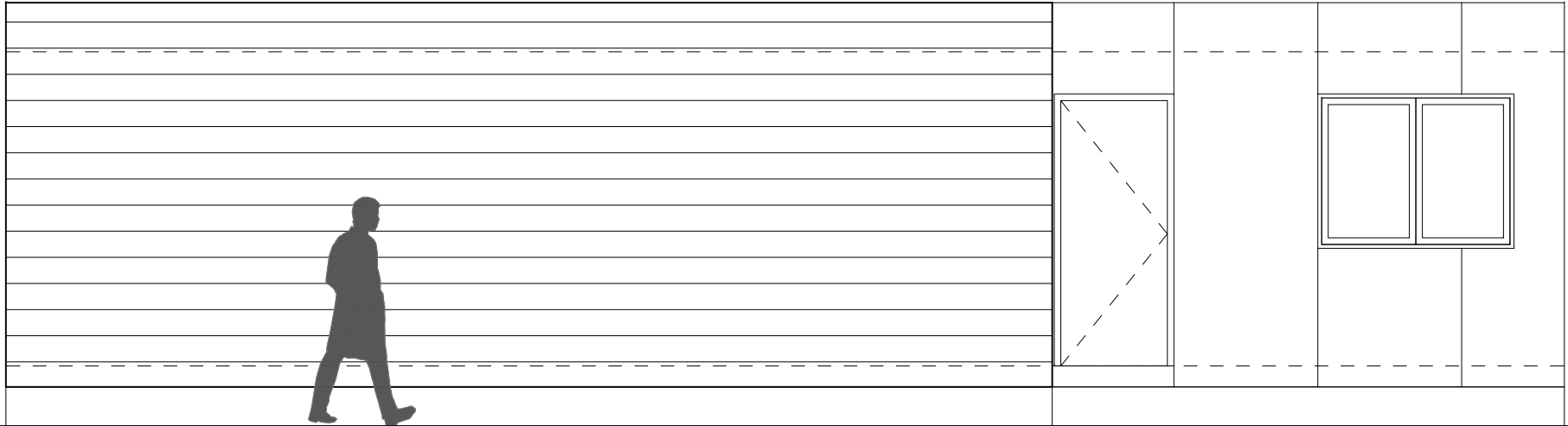


ALZADO 1

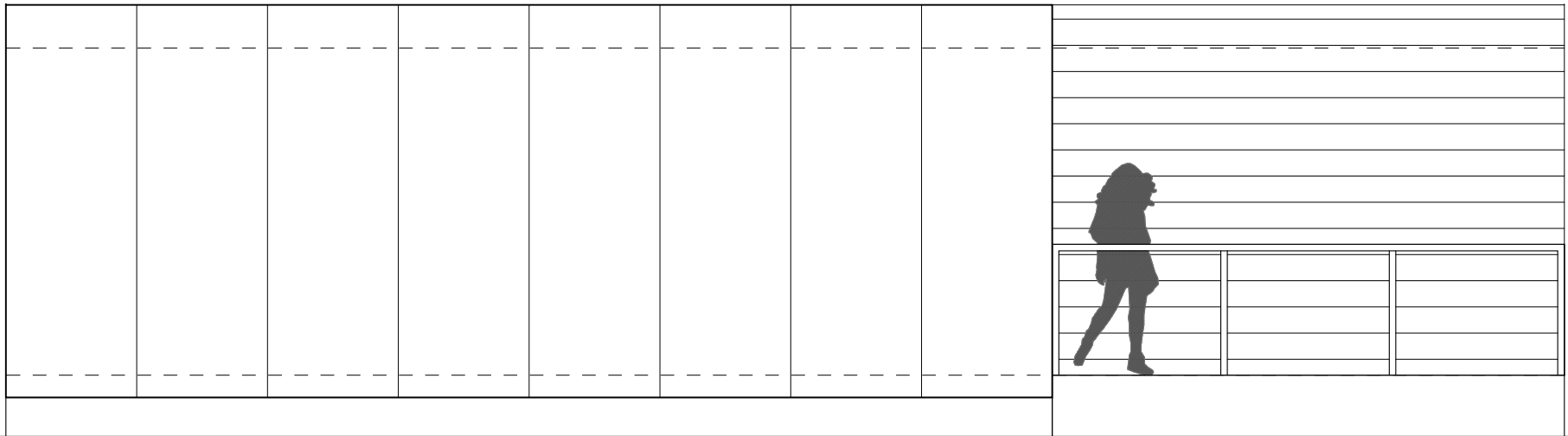


ALZADO 2

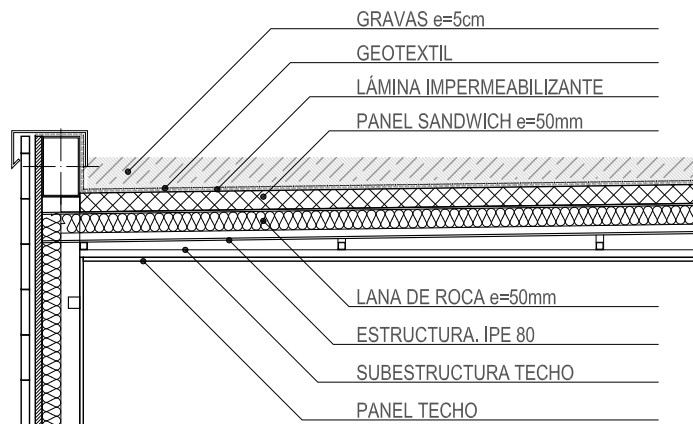




ALZADO 3



ALZADO 4

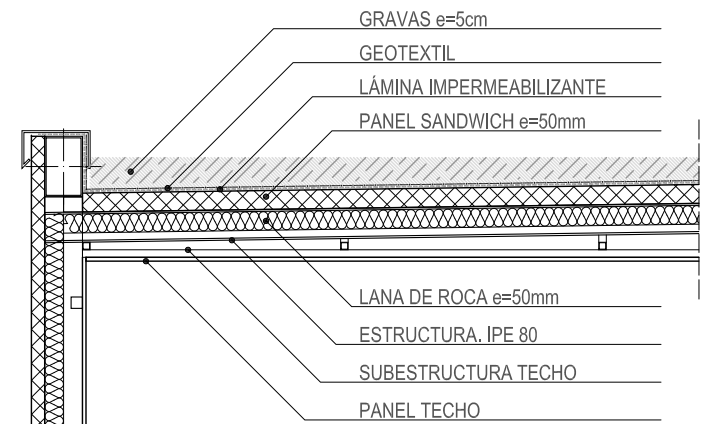


FACHADA VENTILADA DE LAMAS DE MADERA
 TABLERO OSB e=18mm
 LÁMINA TYVEK ADHERIDA EN LA CARA EXTERIOR

LANA DE ROCA e=50mm
 SUBESTRUCTURA
 PANEL PARED

TARIMA FLOTANTE
 PANEL SANDWICH e=50mm
 ESTRUCTURA. IPE 80

FACHADA ACABADO MADERA e:1/20



PANEL SANDWICH e=35mm
 LANA DE ROCA e=50mm

SUBESTRUCTURA
 PANEL PARED

TARIMA FLOTANTE
 PANEL SANDWICH e=50mm
 ESTRUCTURA. IPE 80

FACHADA ACABADO METAL e:1/20